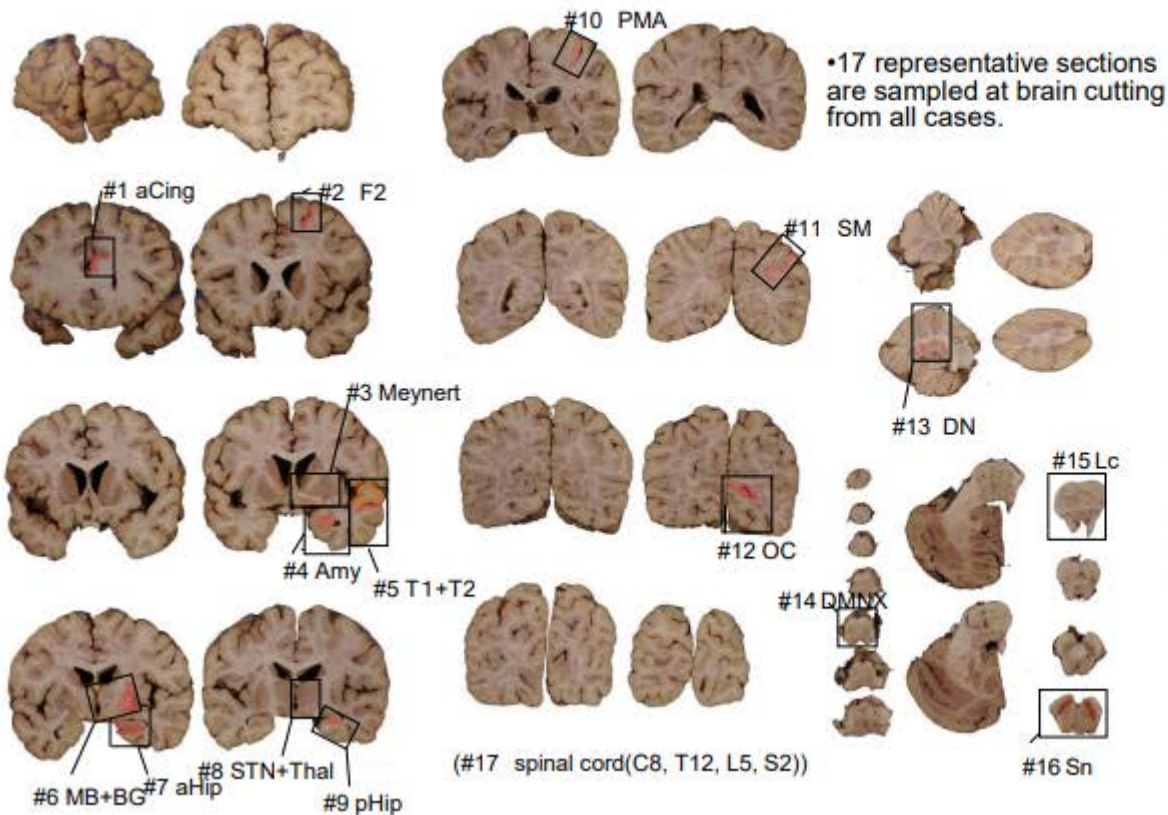


Scheme of 17 blocks for abbreviated protocol



- #1 aCing: anterior cingulate
- #2 F2
- #3 Meynert: nucleus basalis of Meynert and basal ganglia
- #4 Amy: amygdala
- #5 T1+T2
- #6 MB+BG: mamillary body and basal ganglia
- #7 aHip: anterior hippocampus
- #8 STN+Thal: subthalamic nucleus and thalamus
- #9 pHip: posterior hippocampus
- #10 PMA: primary motor area
- #11 SM: supramarginal gyrus
- #12 OC: occipital lobe (including striate and peristriate area)
- #13 DN: cerebellum (including dentate nucleus)
- #14 DMNX: medulla (including dorsal motor nucleus of vagus)
- #15 Lc: pons (including locus ceruleus)
- #16 Sn: mid brain (including substantia nigra)
- #17 spinal cord: C8, T12, L5, S2